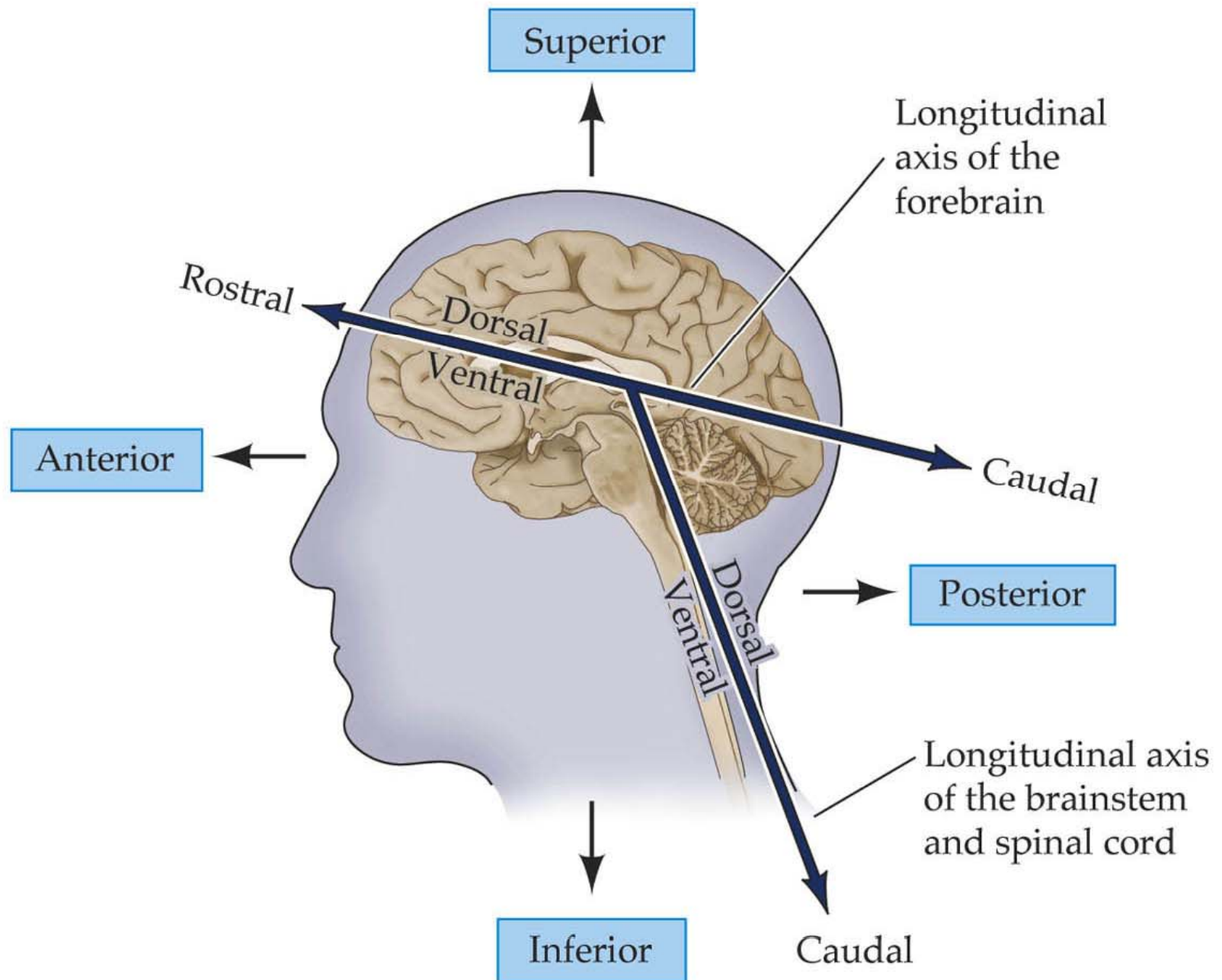




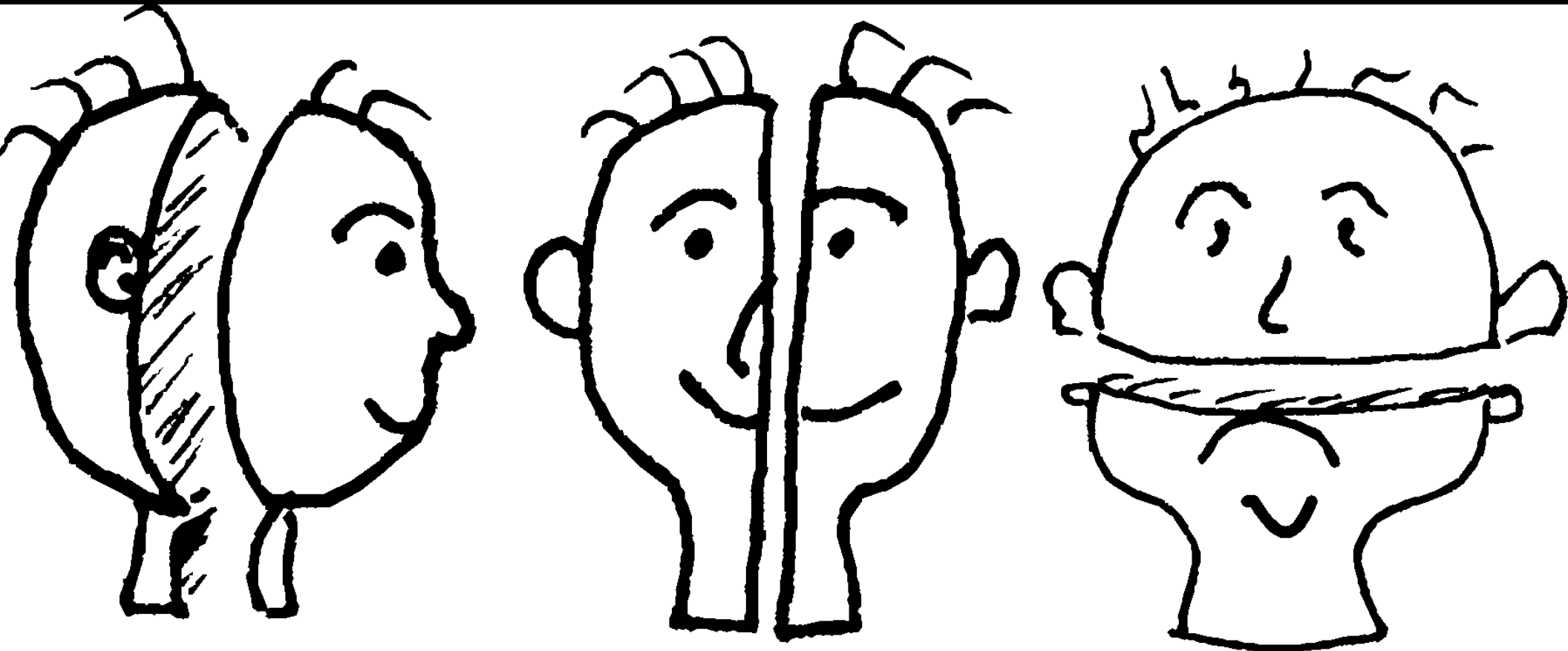
Douglas Oliver

GROSS ANATOMY OF CNS

(A)



Anatomical Planes



Coronal

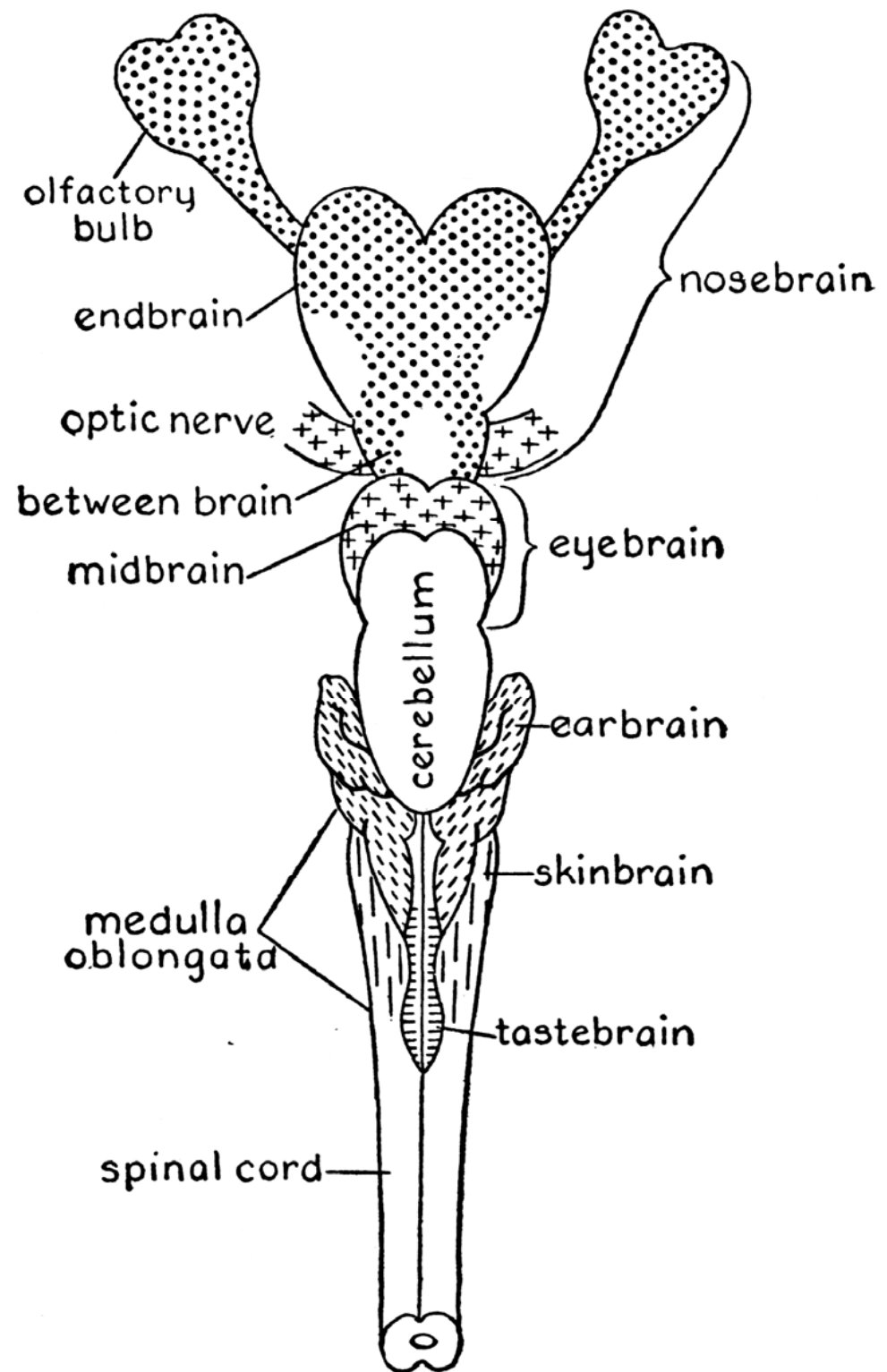
Sagittal

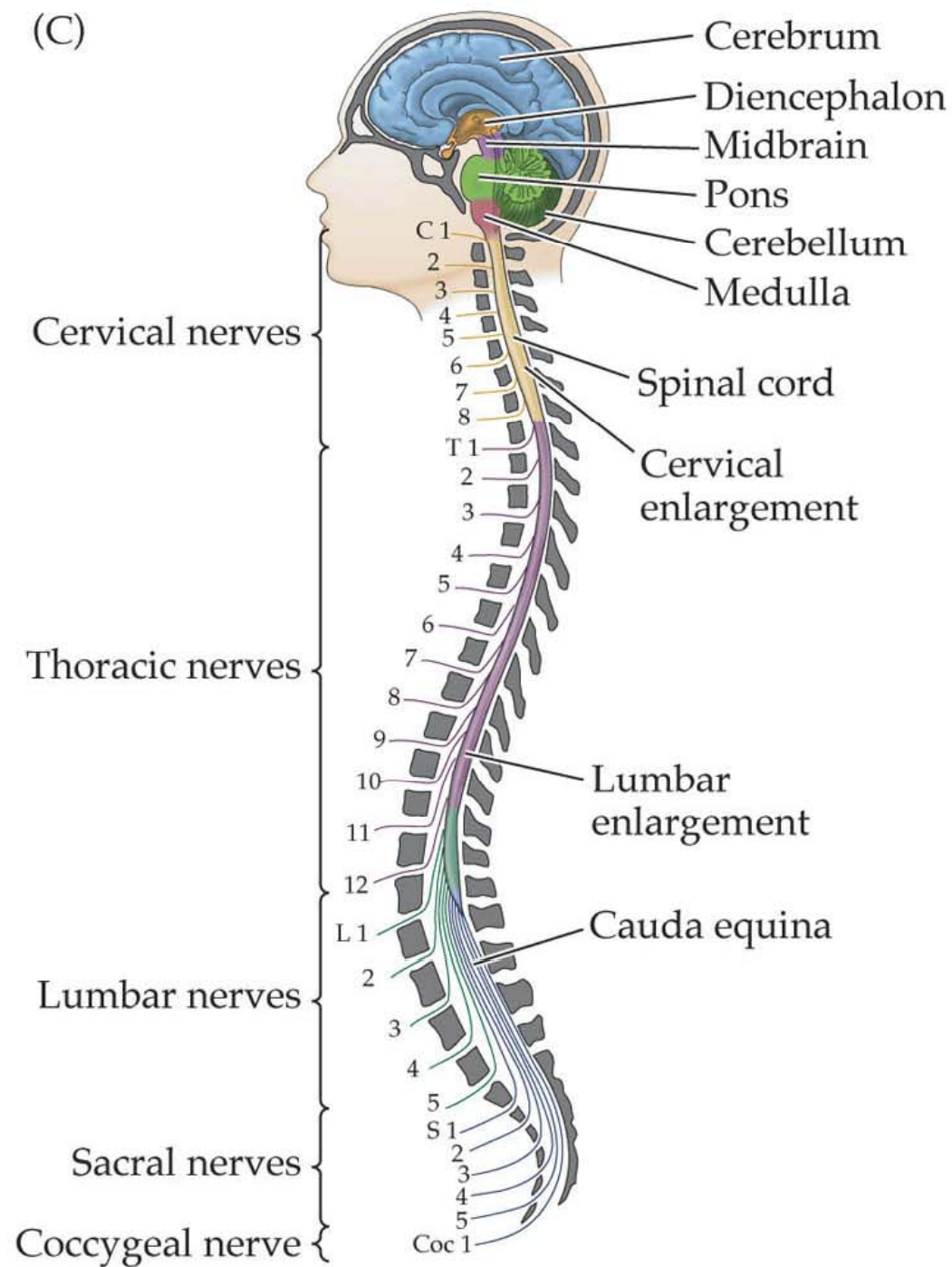
Horizontal

THE ANATOMICAL PLANES

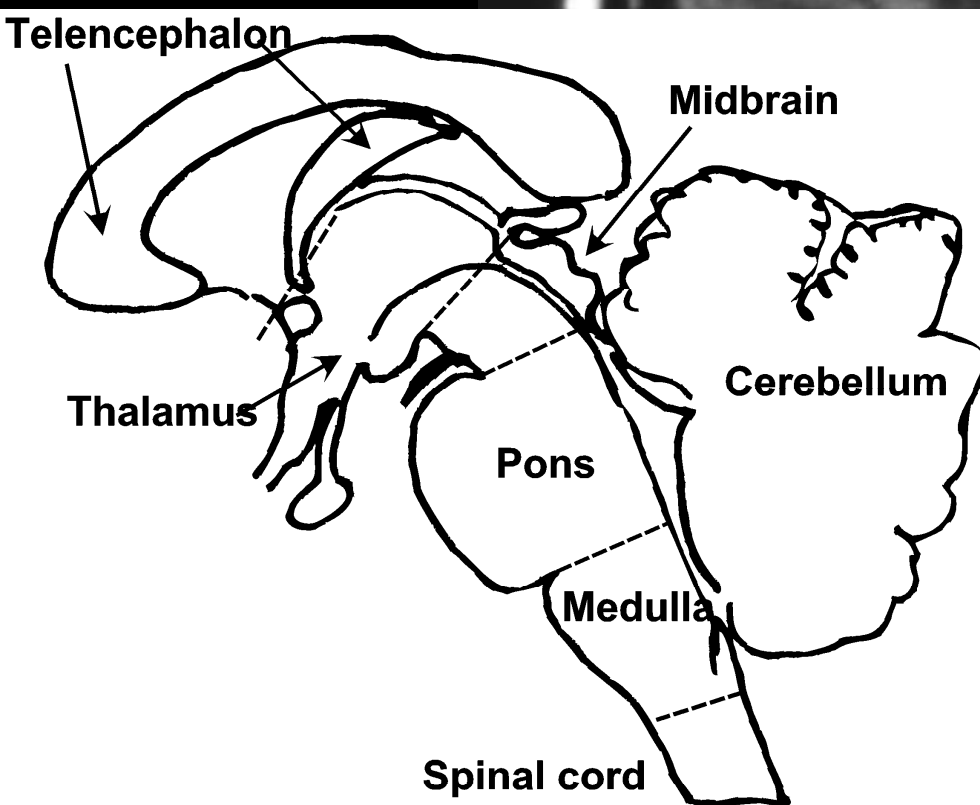
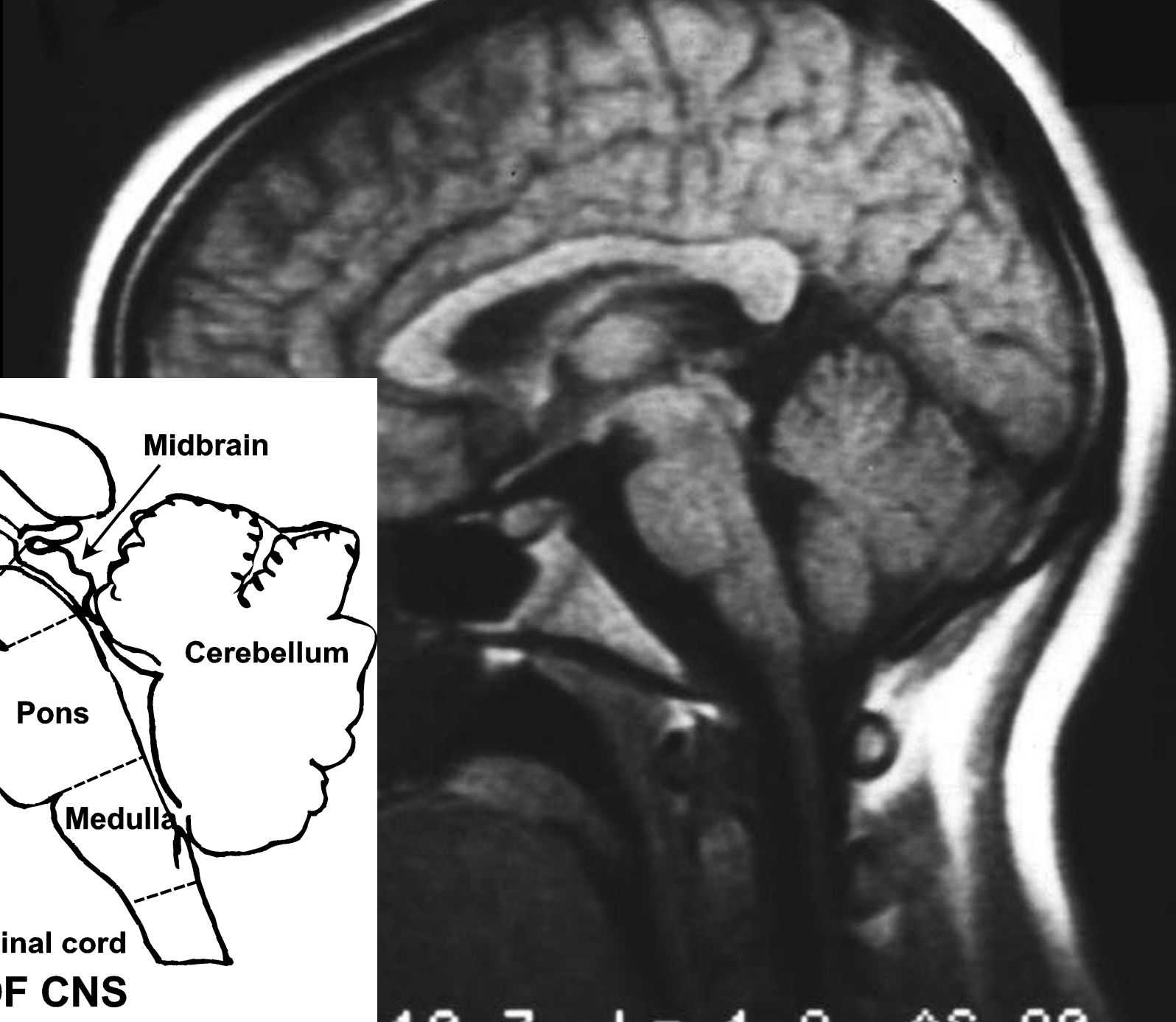
The Five Parts of the Brain in the Shark

- Telencephalon
- Thalamus (Diencephalon)
- Midbrain (Mesencephalon)
- Pons (Metencephalon)
- Medulla (Myelencephalon)
- Spinal cord



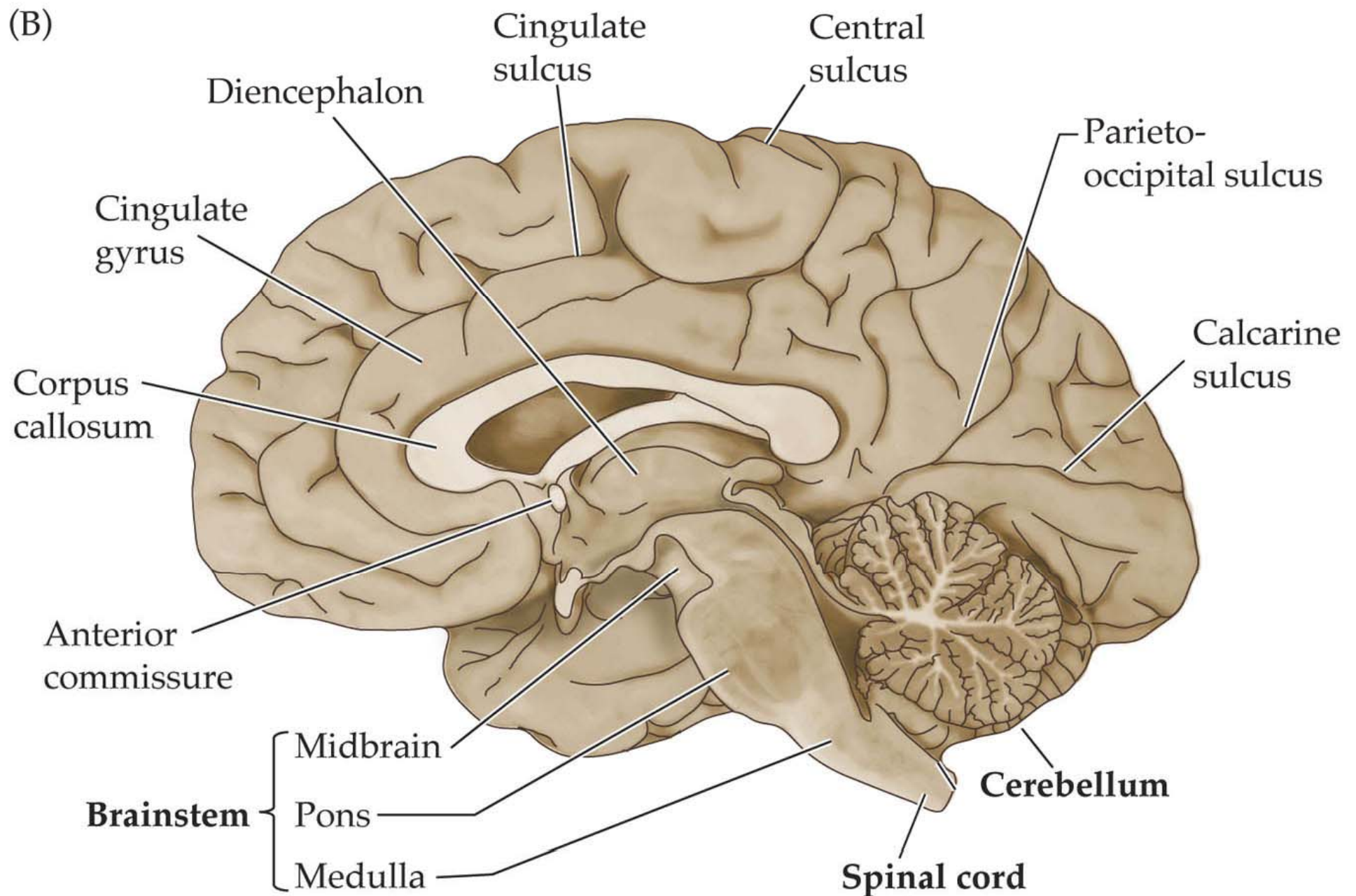


Midline MRI

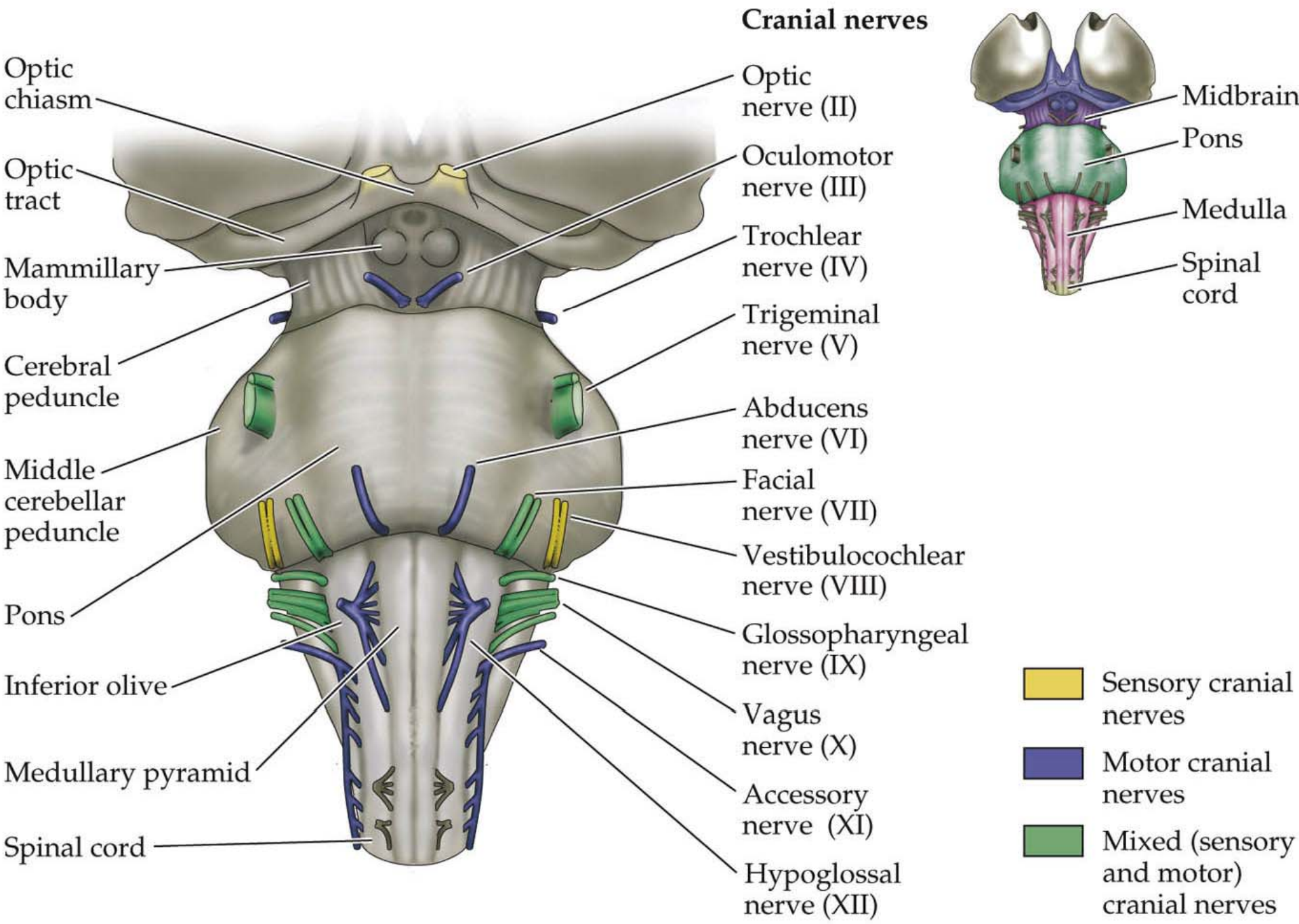


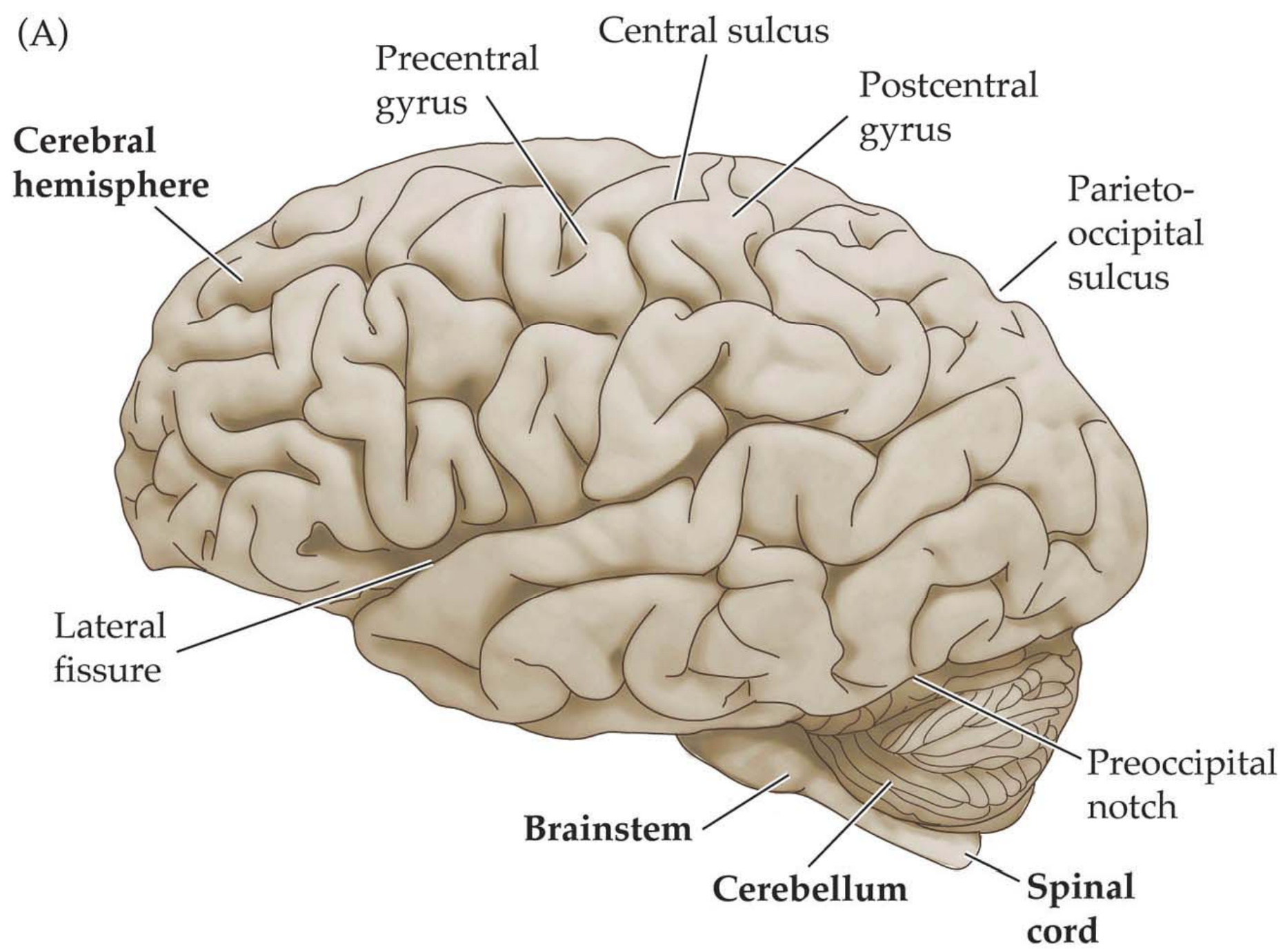
MAIN REGIONS OF CNS

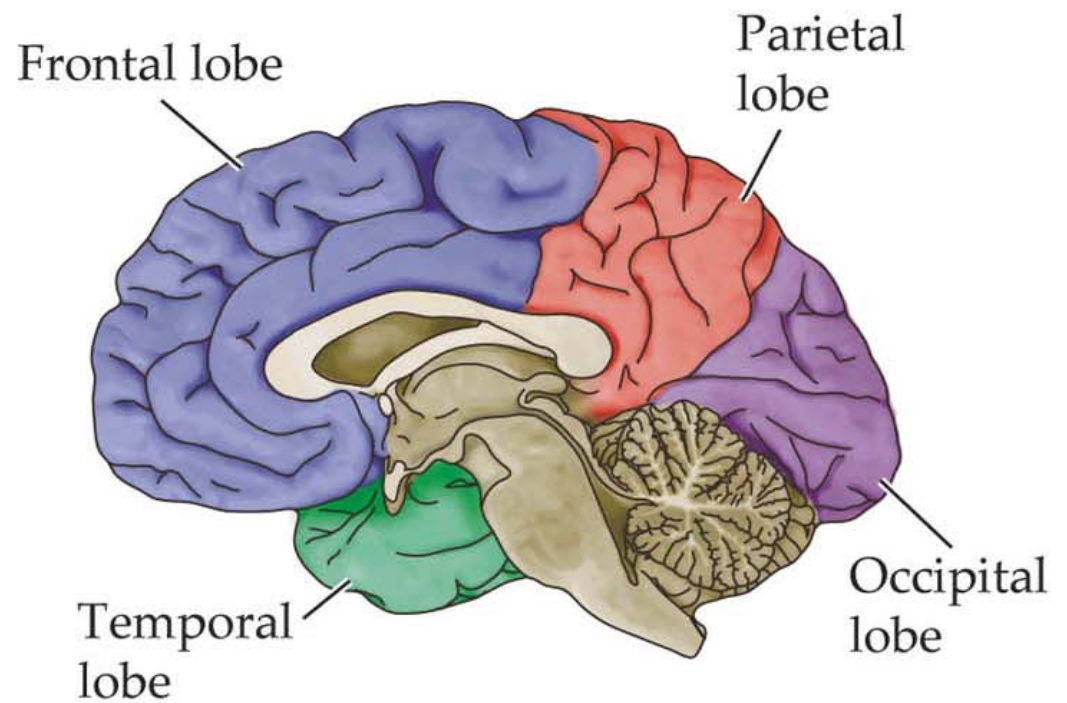
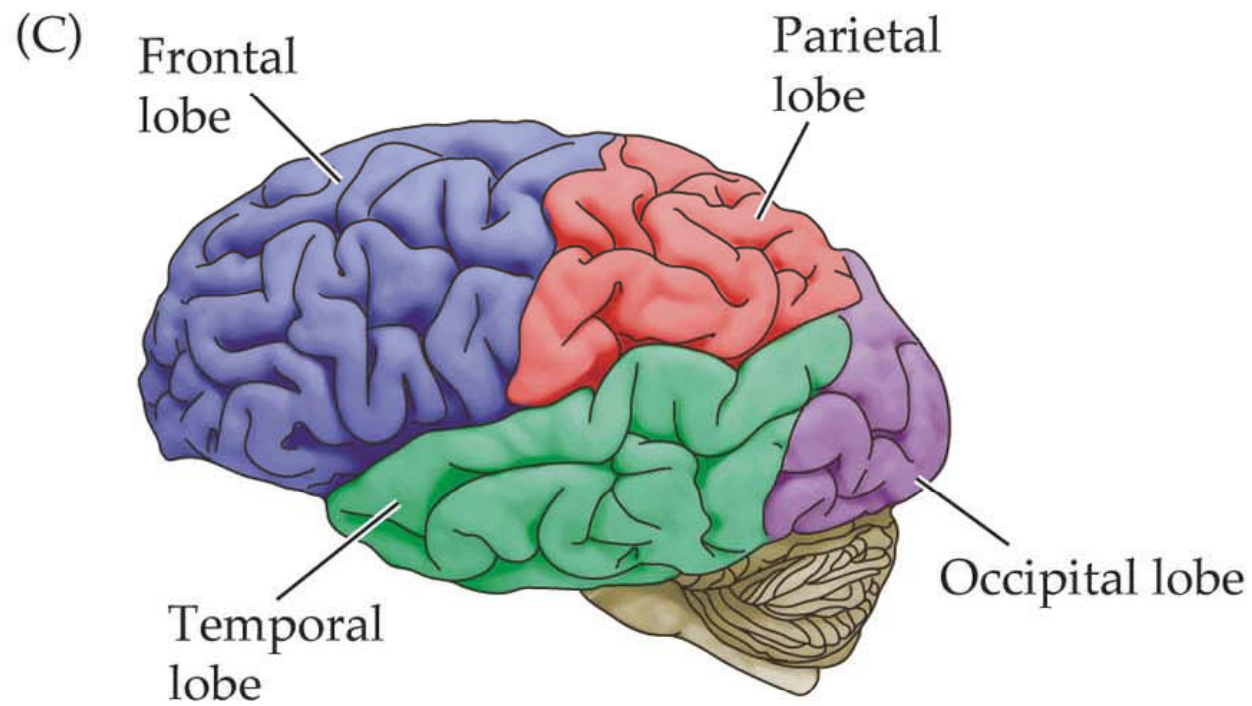
1.12 Gross anatomy of the forebrain. (Part 2)



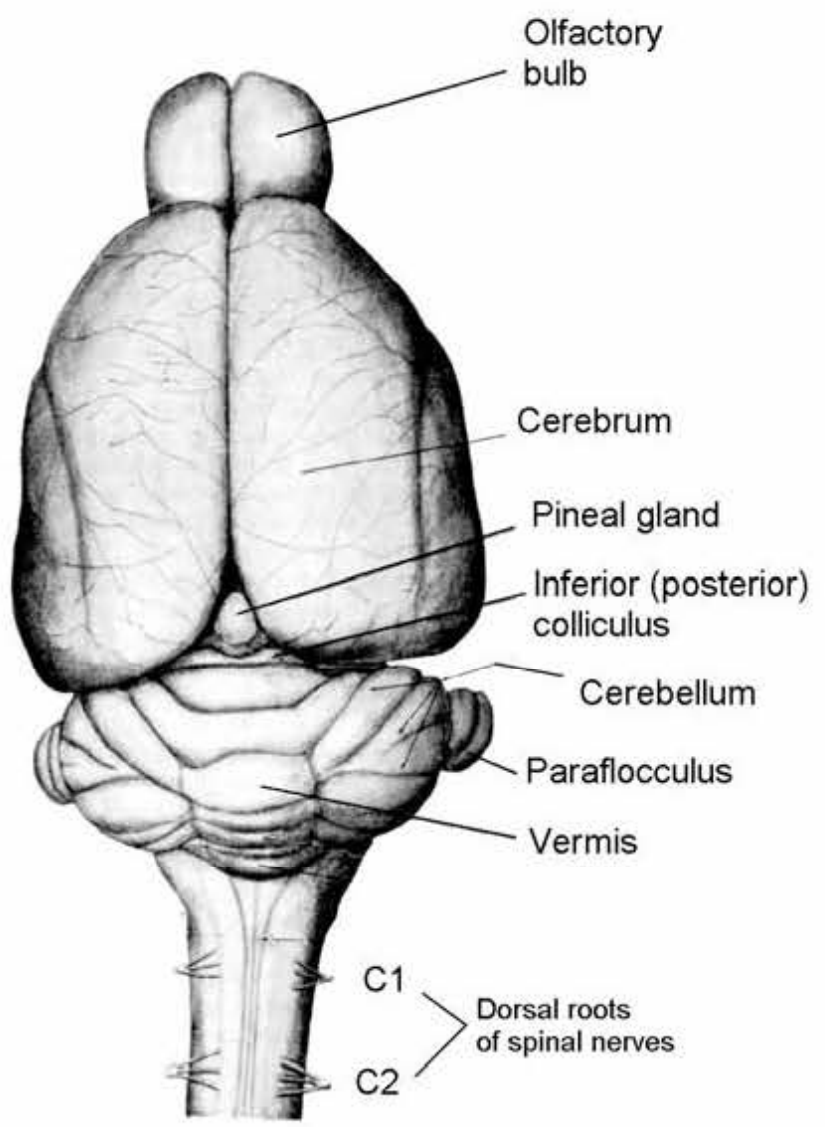
A1 Ventral view of the brainstem showing the locations of the cranial nerves.



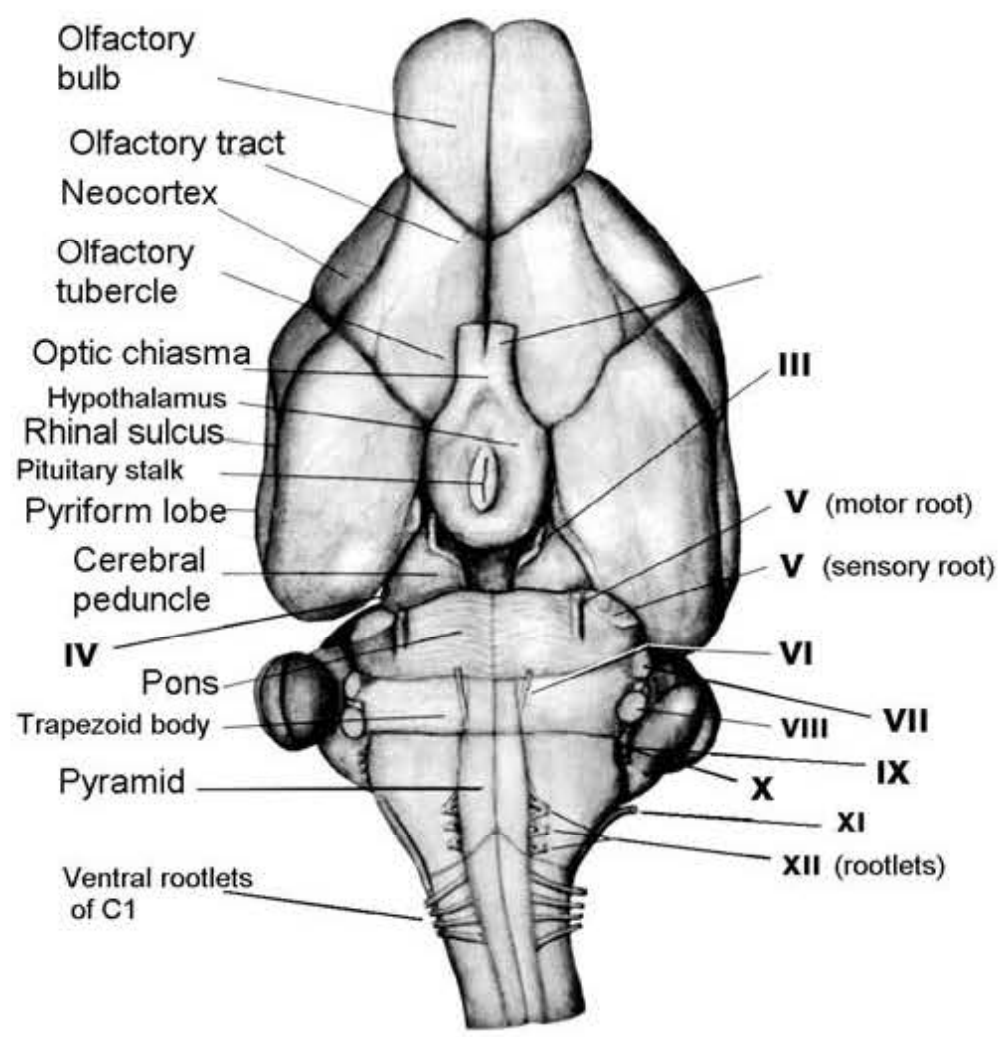




Rat Brain – Dorsal and ventral view

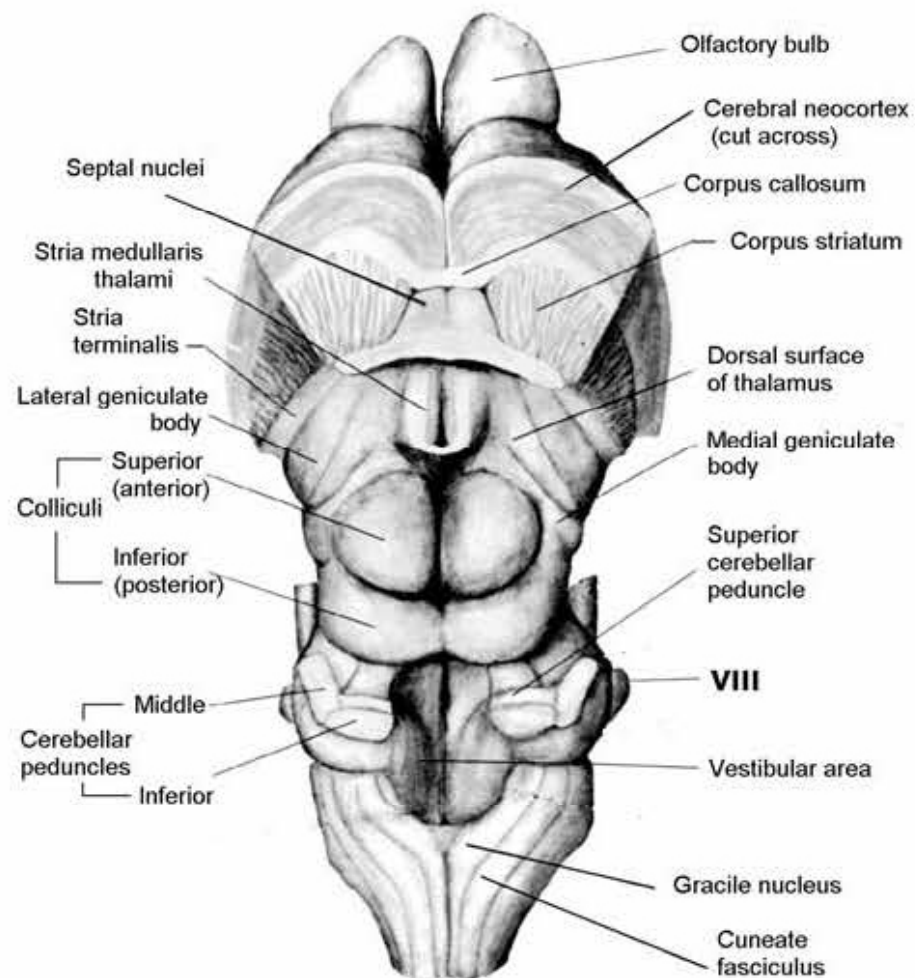


Dorsal aspect of brain and rostral two segments of spinal cord.

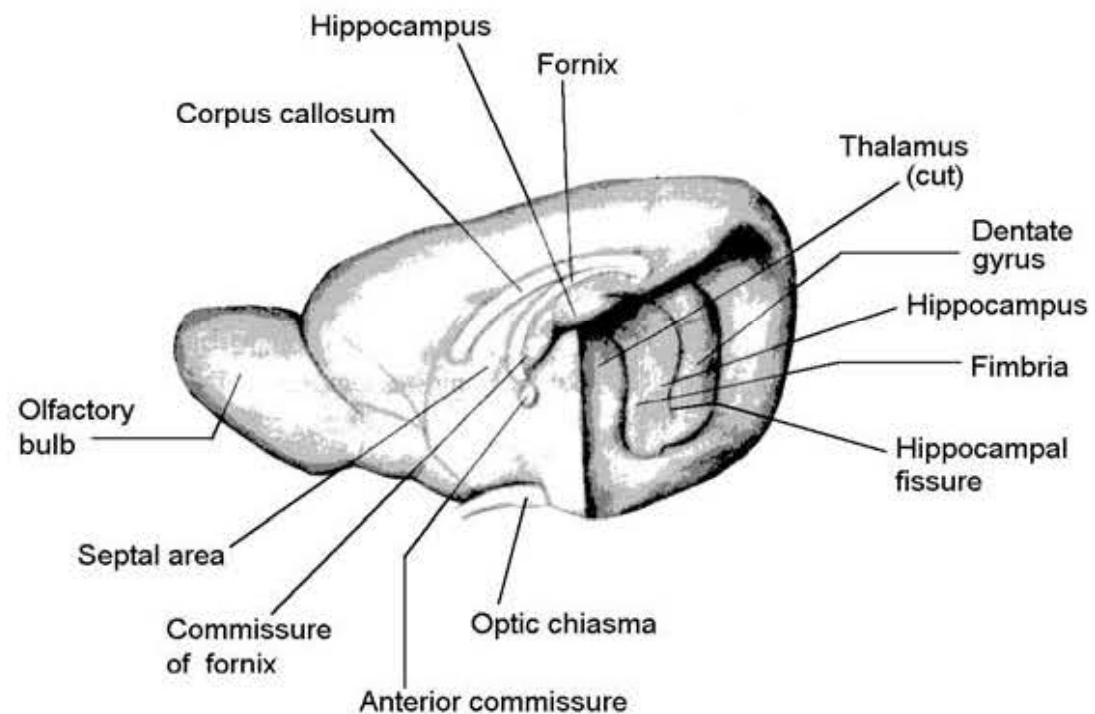


Ventral aspect of the brain, and junction of medulla with spinal cord.

Rat Brain – Dorsal Brainstem and Medial Surface



Dissection: Dorsal view of brain stem after removal of cerebellum.



Dissection: Medial view of the right cerebrum.
Hippocampus is visible after removing brain stem and most of the right thalamus.